

Shawl

Materials:

350 g of white wool
Needles size 2.5
Crochet Hook size 2.0
2 m of ribbon (2 cm wide)

Stitches used:

Stitch 1: garter stitch (knit all rows)
Stitch 2: knit (knit front rows, purl back rows)
Stitch 3: purl (purl front rows, knit back rows)
Stitch 4: stripes: knit rows 1 and 4, purl rows 2 and 3
Stitch 5: fantasy:

- Rows 1 to 8: garter stitch
- Rows 9 to 12: see stitch 2
- Row 13: * knit 2 together, yarn over*
- Row 14: knit all
- Rows 15 and 16 see stitch 2

Stitch 6 (leaves): see charts a,b,c,d, and e.
Stitch 7: lace – follow the chart

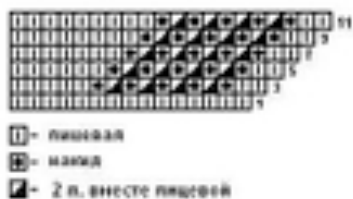


Chart symbol translation:

- knit
- purl
- knit 2 together
-

Gauge: Sticth 4 : 16 st x 30 rows = 5 cm

The shawl consists of 3 parts: 2 triangles attached to each other to form a square, and an edging attached to the sides of the square

Triangle #1:

Cast 10.

Row 1: work 3 with Stitch 3, yarn over, work 1 with Stitch 4, yarn over, work 2 with Stitch 3, yarn over, work 1 with Stitch 4, yarn over, work 3 with Stitch 3.

In the back (that is, even) rows, knit the yarn overs by crossing them over and add those increased stitches to Stitch 4.

Continue by making 4 increases in each front (uneven) row (by doing yarn over after the first 3 st, 1 yarn over at each side of the st in the middle and 1 yarn over before the last 3 st.).

Work 218 rows (=444 st). Cast off loosely.

Triangle #2:

Cast 8.

Row 1: purl 3, yarn over, purl 2, yarn over, purl 3.

Row 2: knit 3, work the yarn over as a crossed over purl, knit 2, knit 3, work the yarn over as a crossed over purl, knit 3 (each of the 2 crossed over yarn overs corresponds to row 1 of chart "a" of Stitch 6, starting the first leaf).

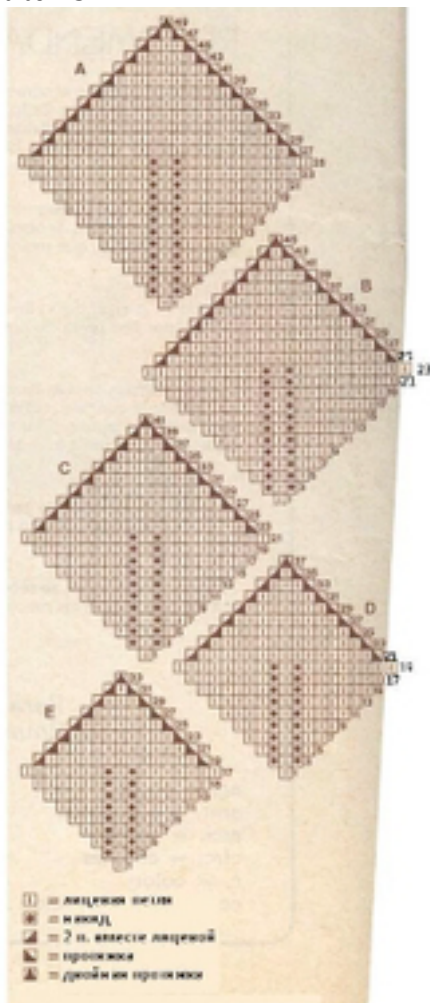
Continue by distributing the stitches as follows:

work 3 with Stitch 3, yarn over, work 1 with Stitch 6 "a", yarn over, work 2 with Stitch 3, yarn over, work 1 with Stitch 6 "a", yarn over, work 3 with Stitch 3.

In each front (uneven) row, make 4 increases (by doing yarn over after the first 3 st, 1 yarn over at each side of the st in the middle and 1 yarn over before the last 3 st.).

In the even rows, knit the yarn overs by crossing them over. Stitches between the leaves are worked with Stitch 3 and those on outer sides of the leaves are worked with Stitch 4.

In row 19, start 4 new leaves (chart 6 "b"): 1 after the first 3 st, one at each side of the middle 2 st and 1 before the last 3 st. Between each of those leaves in row 1, work 8 st in Stitch 3.



Legend:

- knit
- yarn over
- skip, knit, pass the slipped stitch over (left leaning decrease)
- knit 2 together (right leaning decrease)
- double decrease

Start 4 new leaves after each 18 rows, as follows:

Row 19: see Stitch 6 "b"

Row 37: see Stitch 6 "b"

Row 55: see Stitch 6 "c"

Row 73: see Stitch 6 "c"

Row 91: see Stitch 6 "d"

Row 109: see Stitch 6 "d"

Row 127: see Stitch 6 "d"

Row 145: see Stitch 6 "e"

Row 163: see Stitch 6 "e"

Row 181: see Stitch 6 "e"

Having finished the last leaves, add 2 rows in Stitch 2 and cast off loosely.

Edging

Cast 45 and work 1256 rows (most probably a typo, I guess it should be 126 rows) distributing the stitches as follows: 15 st with Stitch 7, 26 st with Stitch 5 and 4 st with Stitch 1. Cast all stitches loosely.

Finishing

Put the triangles over each other (front sides inside) and join them with a crochet hook over the upper edge by doing a row of single crochets.

The other 2 edges are worked as follows:

Row 1: 1 sc joining both triangles, followed by ch-6 for elevating.

Row 2: 2 trdc (crochet with 3 yarn overs) together, * ch-4, skip 3, 1 trdc into the next st, ch-4, skip 3 and 3 trdc together into the next st *; repeat between **, ch-1 for elevating.

At the corner of the shawl, work 2 groups of 2 trdc together.

Row 3: 4 sc into each ch-4 space of the previous row.

Attach the edging to the main square, pull the ribbon along the row of trdc.